

SUDAN CONFLICT OBSERVATORY

SITUATIONAL AWARENESS REPORT

REPORT 005 | 07 JULY 2023

Satellite data ©2023 Maxar Technologies, Planet Labs PBC.
Icons sourced royalty free from the Noun Project.

All imagery and data analysis ©2023 Humanitarian Research Lab at Yale School of Public Health, PlanetScape Ai LLC.

This report was produced as part of the Sudan Conflict Observatory with the support of the Bureau of Conflict and Stabilization Operations, United States Department of State. This report does not represent the views of the United States Government. Learn more at [Sudan.ConflictObservatory.org](https://sudan.conflictobservatory.org).

The Faculty Director of the Humanitarian Research Lab (HRL) at Yale is Dr. Kaveh Khoshnood. Report production was overseen by Nathaniel Raymond, HRL Executive Director, and managed by Caitlin Howarth, HRL Conflict Observatory Director. Analysis was conducted by the Humanitarian Research Lab.

Dr. Andrew Marx is CEO and chief scientist at PlanetScape Ai.

CITATION | Howarth, Caitlin N., Kaveh Khoshnood, Andrew Marx, Nathaniel A. Raymond, et al. "Widespread Human Security & Humanitarian Conflict Impacts." Report 005 07 July 2023, Sudan Conflict Observatory: Washington, DC. Available at <https://sudan.conflictobservatory.org>.

METHODOLOGY



This report was produced as part of the Conflict Observatory with the support of the Bureau of Conflict and Stabilization Operations, United States Department of State. This report does not necessarily represent the views of the United States Government.

Mobility Data

Gravy Analytics (gravyanalytics.com) is a commercial company providing hundreds of companies aggregate location information products. All data is commercially available and maintains the highest privacy standards including containing no personal identification information, collected only from users who opt-in to sharing their data and meeting all legal and privacy guidelines including the EU's General Data Protection Regulation (GDPR).

Satellite imagery

© Planet Labs 2023

© Maxar via Google Maps

This report was produced by PlanetScape Ai. All research and analysis was conducted by PlanetScape Ai.

To contact PlanetScape Ai, email info@planetscapeai.com.

METHODOLOGY

Yale SCHOOL OF PUBLIC HEALTH
Humanitarian Research Lab

Data fusion methodologies combine remote sensing analysis with open-source data to assess and geolocate events. When necessary, sources are redacted for protection purposes; a redacted source list is available to authorized users.

Terms

- NASA FIRMS | NASA Fire Information for Resource Management System
- Reported | Based on credible, verified media reporting

KEY FINDINGS

- Damage to civilian infrastructure as a result of ongoing fighting between RSF and SAF in Omdurman continues to occur.
- The functioning of a critical water pumping station in El-Obeid has deteriorated since the start of the conflict.
- 427 buildings have been damaged or destroyed to date in Khartoum State, a 7% increase over last week.
- Major corridors in Darfur continue to have significantly reduced mobility since the outbreak of conflict (-51%).
- Migration out of Khartoum continues with a 57% reduction in estimated population since the start of conflict.

Water Pump Station, El-Obeid

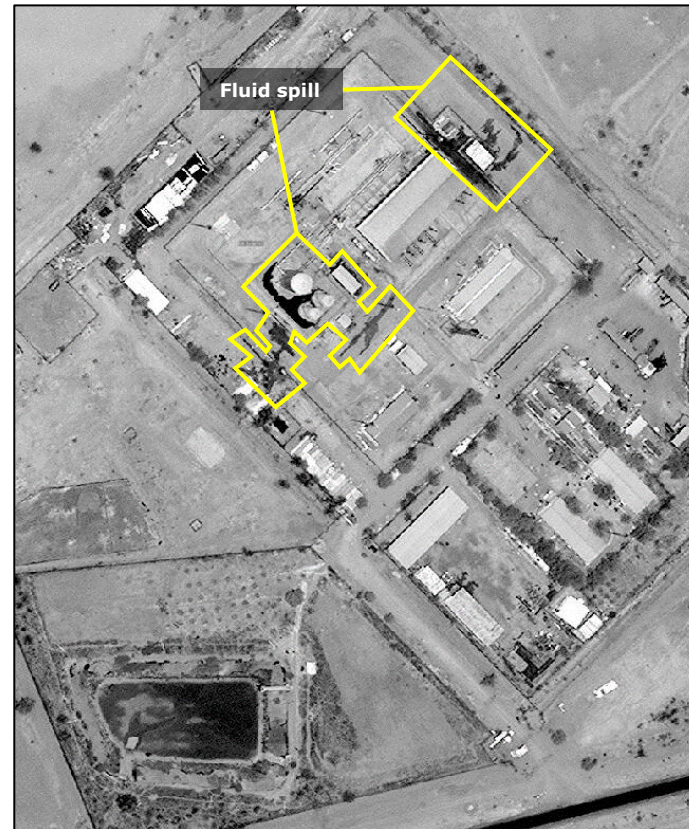
EL-OBEID'S OVERALL WATER TREATMENT CAPACITY IS LIKELY TO HAVE BEEN AFFECTED BY RSF CONTROL.

Based on imagery captured 28 June 2023, function at a water pump station in El-Obeid has been negatively affected since 15 April 2023. Fluid spillage and flooding suggest likely mismanagement at the facility as a result of conflict in the area. The functioning of the plant has deteriorated over time.

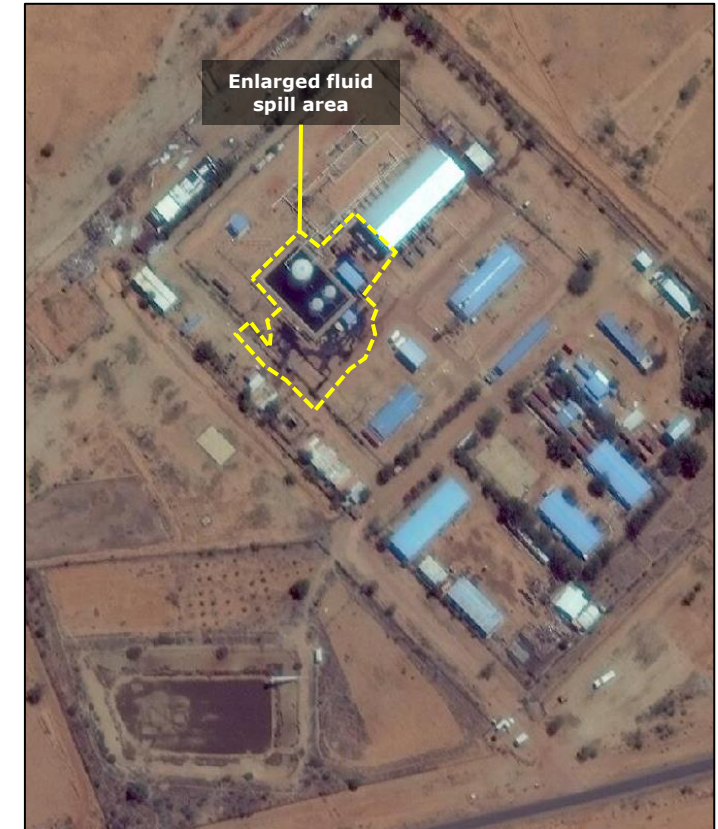
Stations such as this one are critical to water processing, treatment, and sanitation. The failure of facilities such as this one increases the risk of water-borne diseases as a result of a lack of potable water and a lack of effective sewage treatment.



15 April 2023 | © 2023 Airbus



7 May 2023 | © 2023 Maxar



28 June 2023 | © 2023 Maxar

Fighting in Omdurman

ONGOING RISKS TO CIVILIAN SECURITY ACROSS OMDURMAN

Imagery captured on 2 July 2023 corroborates open-source multimedia of fighting in Omdurman and damage to buildings surrounding densely populated neighbourhoods.

This is consistent with reports of increased fighting between RSF and SAF in Omdurman over the past week.



2 July 2023 | © 2023 Maxar

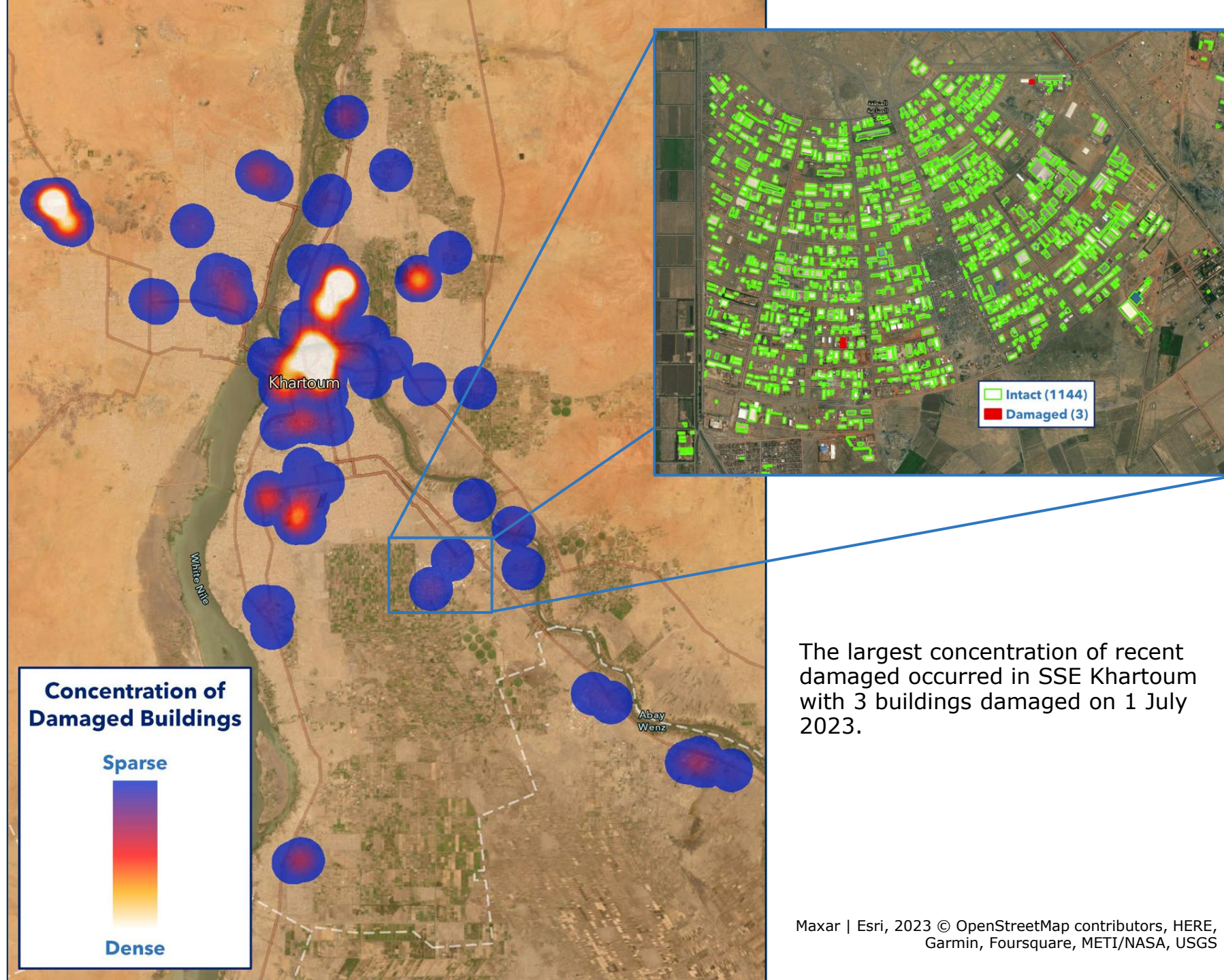


SCO_005_01

Khartoum

BUILDING DAMAGE UPDATE

- 427 buildings have been identified as destroyed since the start of the conflict, 6 have been destroyed since 28 June 2023.
- The conflict has been averaging approximately 36 damaged buildings per week.

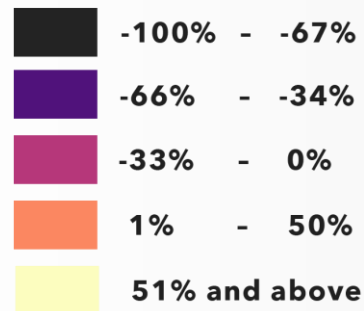


The largest concentration of recent damaged occurred in SSE Khartoum with 3 buildings damaged on 1 July 2023.

Change in Mobility Corridors

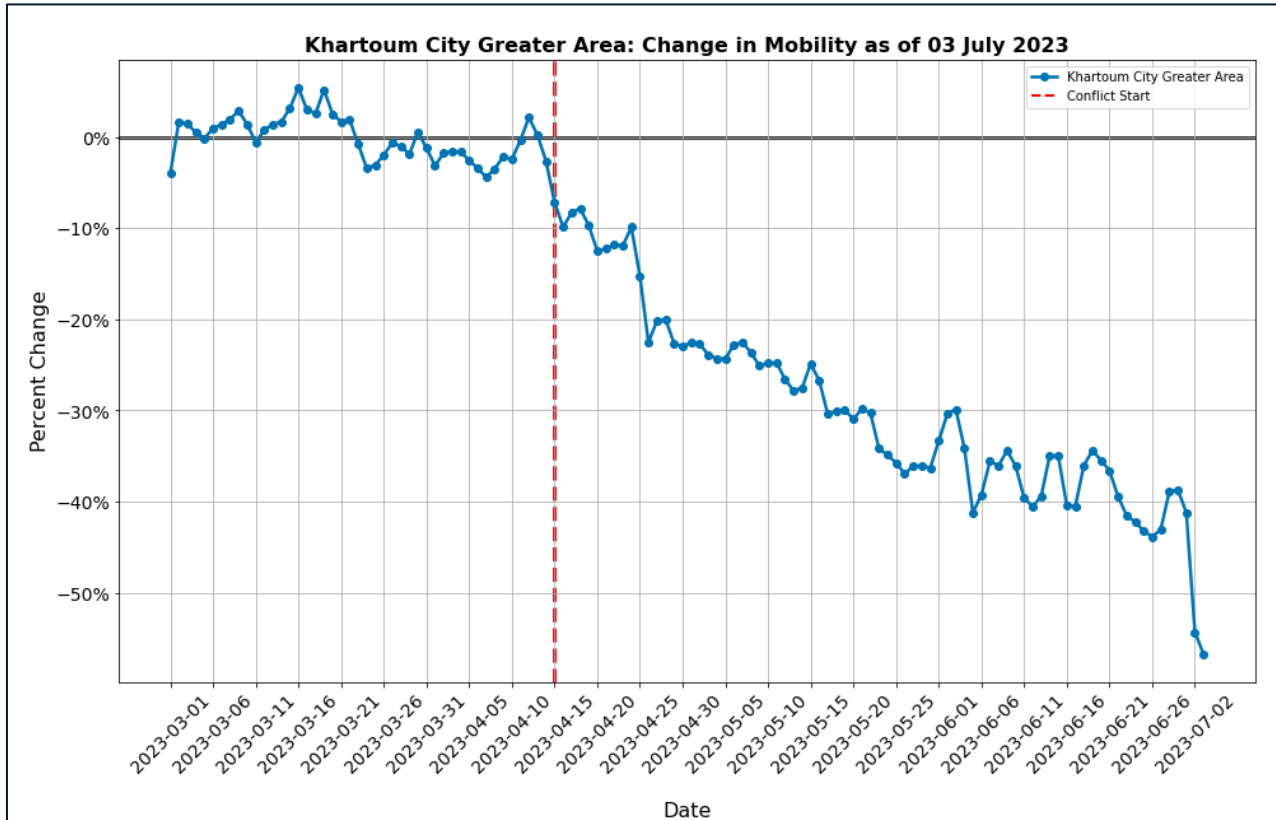
19 JUNE - 02 JULY vs. PRE-CONFLICT

- An average decrease of 51% across five mobility corridors in Darfur since the outbreak of conflict persists.
- Small increases in mobility between Darfur cities were observed during this reporting period, most notably between El-Geneina and El-Fasher.
- The low mobility around Darfur cities likely represent regional restrictions to movement increasing the risk of mass atrocities in the region.

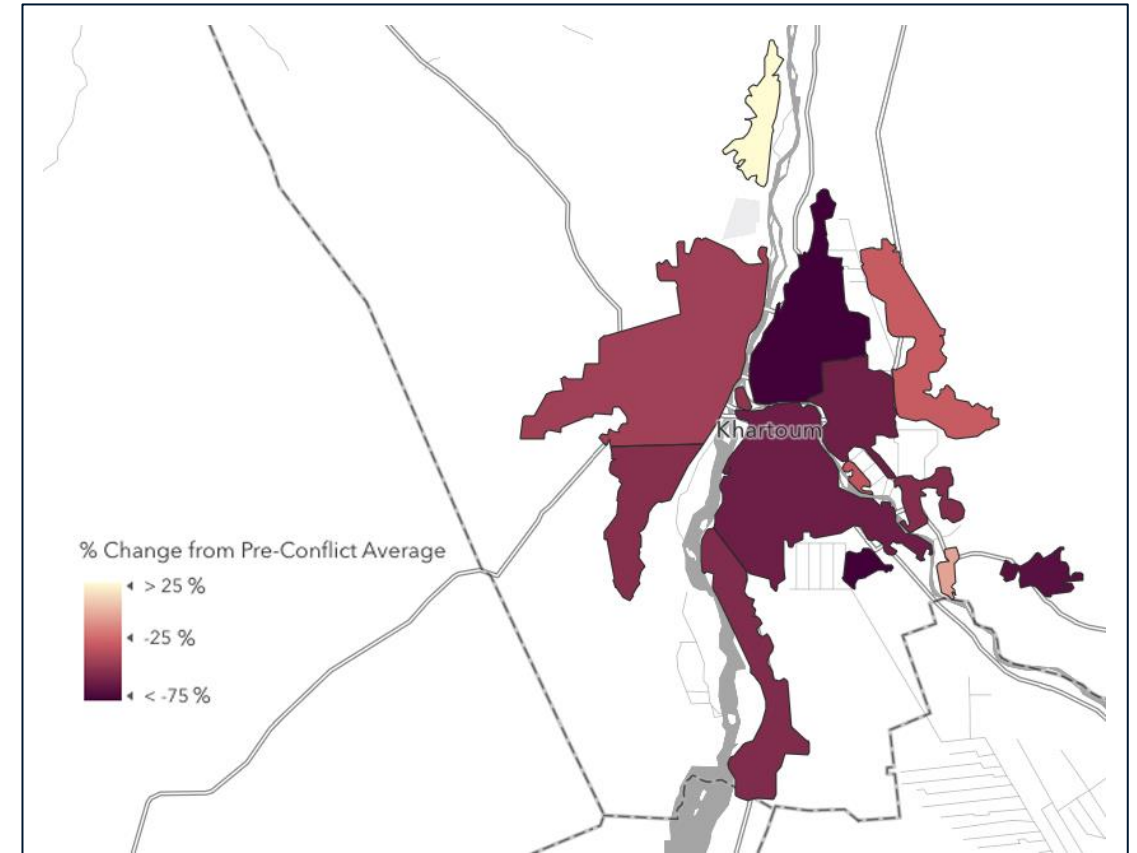


Khartoum

DECREASE IN MOBILITY



The Khartoum City greater area continues to see a slow decline in its estimated population with a 57% decrease in mobility on 03 July from its pre-conflict average.



Data collected daily within Khartoum City Greater Area highlights sub-areas of the city with higher or lower levels of mobility.

SUDAN
CONFLICT OBSERVATORY

Sudan.ConflictObservatory.org